

IDS7/mx

A multi-modality workstation dedicated to breast imaging



Need for speed

IDS7/mx with Sectra RapidConnect™ technology is a high-performance radiology workstation dedicated to mammography. IDS7/mx is the perfect solution for high-volume breast screening and advanced diagnostic mammography. To meet mammography workflow demands, the workstation features all the functionality required by radiology professionals, in addition to all sophisticated mammography tools needed to provide the best possible support when diagnosing.

The right reading environment

IDS7/mx is a pleasure to work with and provides radiologists with a comprehensive range of tools in one single workstation. As such hospital information systems as HIS or RIS are fully integrated, radiologists will gain immediate access to images and patient and examination information.

All digital breast images are automatically aligned and displayed in the same size facilitating comparison of current and prior examinations.

Remote reading for optimization of resources

IDS7/mx optimizes your clinic's resources — radiologists can perform their work from any location. Sectra RapidConnect technology enables full functionality for remote reading even over high-latency networks. Your productivity is improved as you can easily share mammography services with other hospitals or clinics.

Large images

Problems encountered when working with large images are eliminated with Sectra's technology for retrieving and displaying image data of extreme size, RapidConnect.

SECTRA

Features and benefits

Modern, intuitive user interface

IDS7/mx offers radiologists full productivity from the very beginning. It features an intuitive, Windows®-based user interface and requires minimal training. Radiologists have personalized worklists and can easily tailor the way examinations are displayed and how system tools are used to meet individual requirements for optimal reading.

Instant access to information

IDS7/mx enhances radiology efficiency with instant access to information from current and prior examinations.

Double and triple reading

IDS7/mx supports double reading and double-reading scenarios with more than two readers, triple reading, as well as blind or true blind double reading.

Darker non-image windows

Non-image windows can be dimmed by users to avoid glare. It is possible to set the degree of darkness for the dim effect, as well as whether it should always be on, off or be activated automatically when the cursor is moved away from the window.

Excellent image tools

IDS7/mx provides both generic and mammography specific image tools, combined with centrally stored personal settings accessible on any workstation. Multiple-user profiles with user-specific language settings are supported. All screen space is used for displaying images. IDS7/mx supports high-resolution monitors from several vendors.

Images automatically displayed

All digital breast images are automatically displayed facilitating comparison of current and prior examinations. Effective pre-fetching of priors combined with automatic display protocols minimize manual interference. True multi-modality capabilities allow images from any modality, such as ultrasound or MR, to be displayed side by side.

Fit breast to window and show all in same size

Images are zoomed automatically so that the mammograms match the window size and all images are displayed in the same dimension, allowing the user to efficiently compare new and prior images regardless of view or vendor.

Horizontal alignment of images

Images are automatically aligned horizontally, since it is crucial to place images back-to-back when comparing left and right breasts or current and prior. True multi-modality capabilities allow images from any modality, such as ultrasound or MR, to be displayed side-by-side.

Mirrored synchronization

Corresponding areas in the left and right breast are compared with a magnifying glass or by panning zoomed images.

Support for mammography CAD

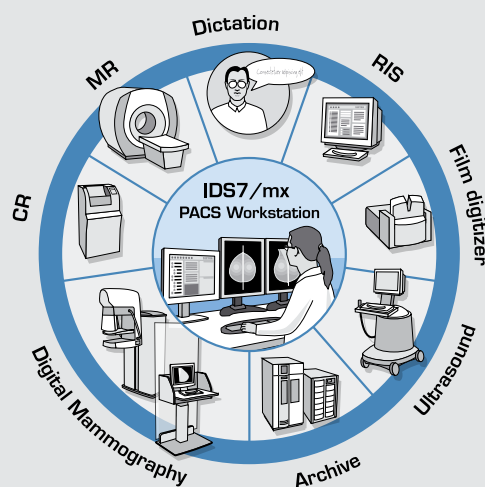
The workstation can use the content of a Mammography CAD, Computer Aided Detection, Structure Report, allowing the radiologist to work efficiently with an integrated CAD in the reading workflow.

Loop hanging forward and backward

The user can switch between the last and first hanging with just one click. In a standard mammography display protocol, the comparison of prior/current, left/right and CC/MLO is just one click away.

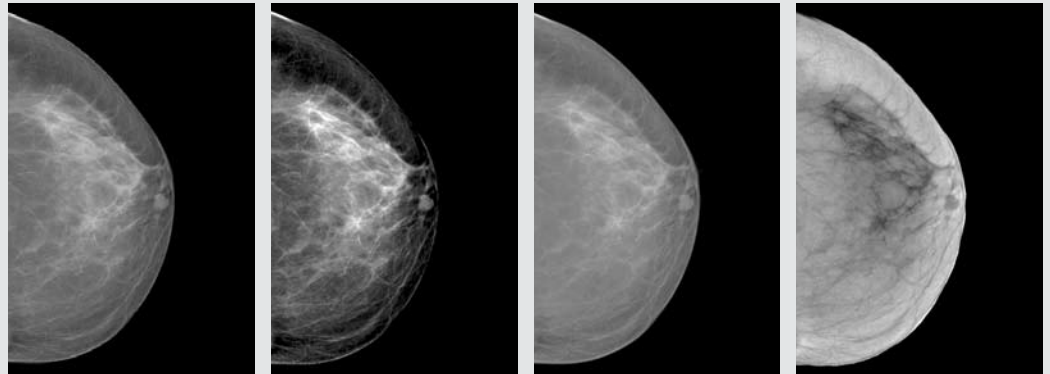
Ergonomic workstation

The dedicated ergonomic keypad offer the user rapid and easy access to the most frequently used tools, and user-configurable shortcuts and hot keys limit the number of clicks.

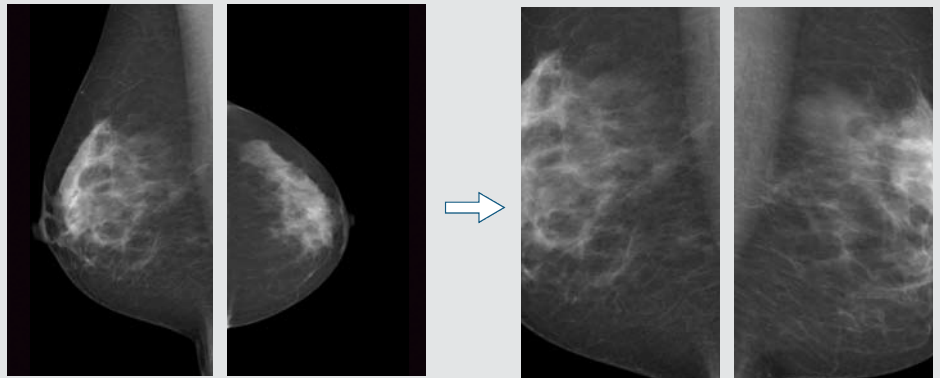


IDS7/mx is a true multi-modality workstation and a powerful tool for reviewing digital breast images from all vendors and all modalities.

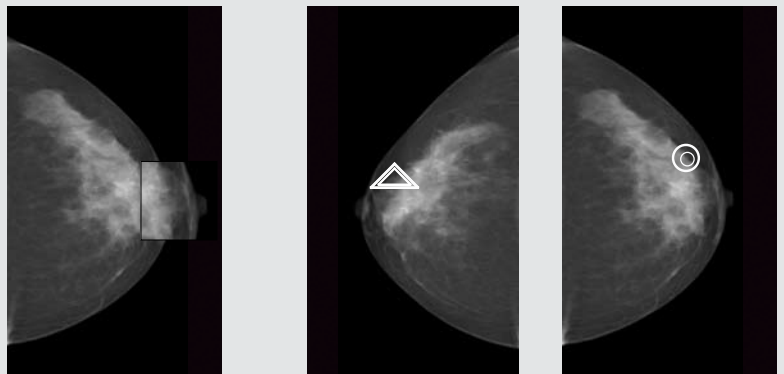
Predefined windows for soft tissue, "normal" and dense tissue, as well as inverted images.



Displayed in same size. Automatically aligned. Synchronized zoom in full resolution.



Magnifying glass and integrated CAD, Computer Aided Detection. By pressing the CAD button on the keypad the results of the CAD analysis are displayed.



Sectra PACS RapidConnect technology

Sectra PACS with RapidConnect

Sectra PACS with RapidConnect™ technology* enables radiologists to perform their work efficiently in a distributed reading scenario. It is designed for variations in network quality and works efficiently over high-latency networks. Access anywhere anytime.

Unsurpassed performance for large datasets

The user can display and navigate a stack of 10,000 slices just as quickly as one with 10 slices. Image data is handled as multi-dimensional volumes rather than single slices. Sectra PACS employs unique retrieval and pre-loading algorithms of images from the server or local cache, where at any given time the data required is prioritized.

Anywhere, anytime functionality

When network capacity permits, a full-data image is retrieved at once. For low-capacity networks, progressive transfer combined with JPEG2000 compression allows the user to gradually refine the image view by requesting more image data from the server. The uncompressed image can always be accessed. In either scenario, the user can start working with the case immediately.

* Patents pending

Sectra PACS uses http and https web protocols, allowing connection to the server through firewalls and over the Internet. Furthermore, it utilizes .NET ClickOnce technology to start the application from within a web browser.

Local cache improves remote-reading performance

Image download to a local computer improves performance over low-bandwidth networks. This provides the user instant access to the full uncompressed images. A complete worklist or selected specific examinations can be pre-loaded, enabling the user to work through the worklist without any delays. The automatic download to local cache ensures patient integrity – no patient information is stored locally, only image data. The user is always on-line to the central database and is thus notified of any changes of data, such as new annotations, between the time of pre-load and the actual reading of the case.

World Headquarters

Sectra Imtec AB
Teknikringen 20
583 30 Linköping
SWEDEN
Phone: +46 13 23 52 00
E-mail: info.imtec@sectra.com

Australia/New Zealand

Phone: +61 2 9420 1620
E-mail: info.anz@sectra.com

Benelux

Phone: +31 36 540 1970
E-mail: info.benelux@sectra.com

Denmark

Phone: +45 45 65 06 00
E-mail: info.dk@sectra.com

Germany/Switzerland/Austria

Phone: +49 241 963 2650
E-mail: info.de@sectra.com

Japan

Phone: +81 90 6911 7410
E-mail: info.jp@sectra.com

Norway

Phone: +47 67 58 97 70
E-mail: info.no@sectra.com

Spain/Portugal

Phone: +34 91 187 52 91/
+351 22 011 00 20
E-mail: info.iberia@sectra.com

Sweden

Phone: +46 13 23 52 00
E-mail: info.se@sectra.se

United Kingdom/Ireland

Phone: +44 1908 673 107
E-mail: info.uk@sectra.com

USA/Canada

Phone: +1 203 925 0899
E-mail: info.na@sectra.com

SECTRA

For other regions please visit sectra.com/medical